

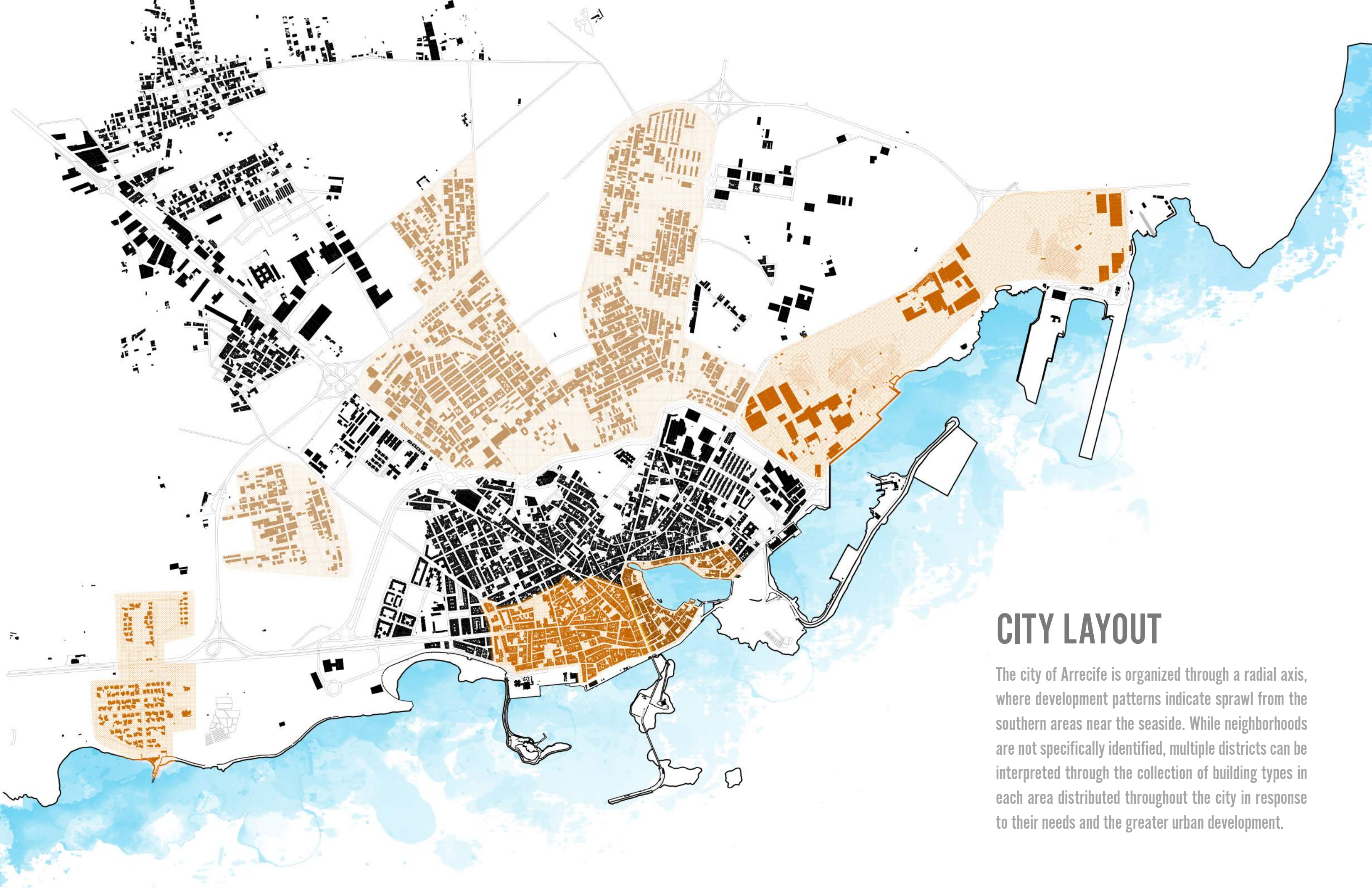
[ARRACIFE SITE ANALYSIS]

ARCHITECTURAL FORM + URBAN DESIGN

ANDREW LAI . JOEY MOSER . KYLE PLATA . ALEX WEAVER

Arrecife Urban Design

CITY DISTRICTS & FABRIC



CITY LAYOUT

The city of Arrecife is organized through a radial axis, where development patterns indicate sprawl from the southern areas near the seaside. While neighborhoods are not specifically identified, multiple districts can be interpreted through the collection of building types in each area distributed throughout the city in response to their needs and the greater urban development.



SEASIDE FABRIC

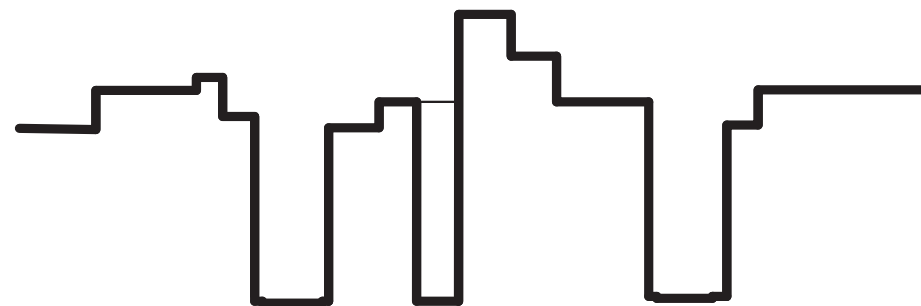
The seaside district occupies the harbor edge and is given form by the contours of the land to water border. Building uses consist of important government buildings and retail for tourism, taking advantage of views by the water.





ORGANIC FABRIC

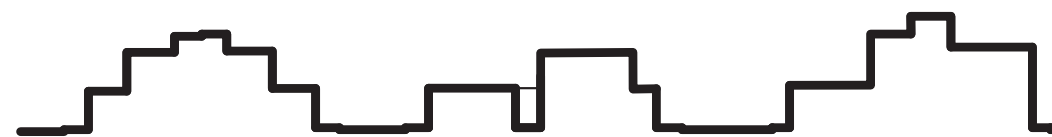
The southern district of Arrecife represents an organic fabric layout. Streets naturally branch off each other and shape themselves as new buildings are erected. Here, buildings respond to the context of other man-made objects to form interesting void space.





GRIDDED RESIDENTIAL

Defined by orthogonal organization and high density, the northern part of Arrecife is dominated by a district of gridded residential buildings. Several multi-family buildings occupy this area and is characterized by more solid than open space.





INDUSTRIAL & COMMERCIAL

The industrial district occupies the eastern part of Arrecife. It is characterized by massive building types that spread over the open land available. These buildings do not follow any particular orientation or layout.





SPACIOUS VILLAS

Arrecife has a distinct district for spacious villas located among the west outskirts of the city. It is defined by vast amounts of open space that surrounds individual villas in a community.



CITY DEVELOPMENT

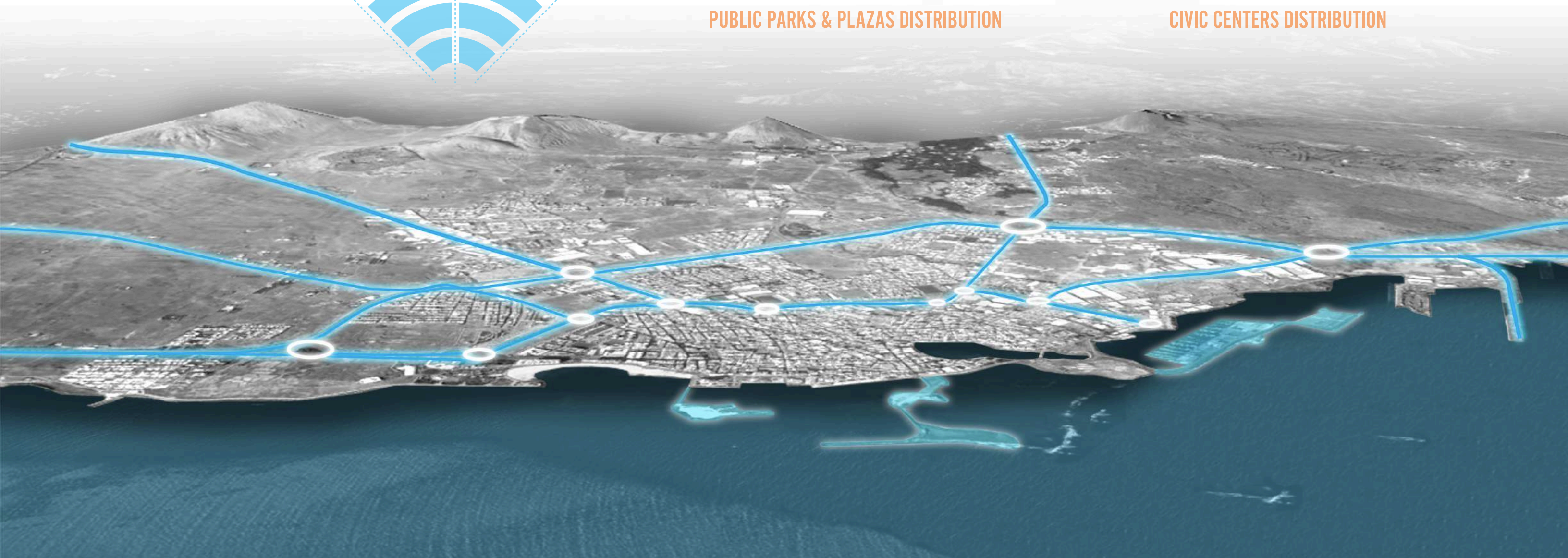
The radial organizational axis of Arrecife is solidified by several primary roads that define the perimeters of the city edges, which results in progressive “ring” layers in the overall city layout. The city fabric changes as it develops through each layer based on the needs and structure of individual districts, which also demonstrates the city’s cultural and socio-economical development through the years.



PUBLIC PARKS & PLAZAS DISTRIBUTION



CIVIC CENTERS DISTRIBUTION



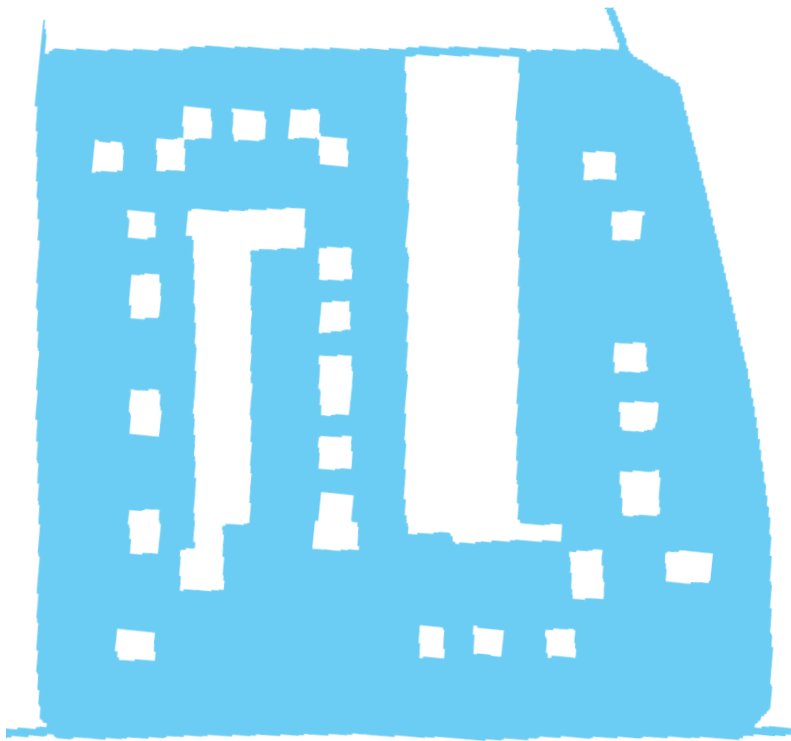
Arrecife Architectural Form

BUILDING TYPOLOGIES

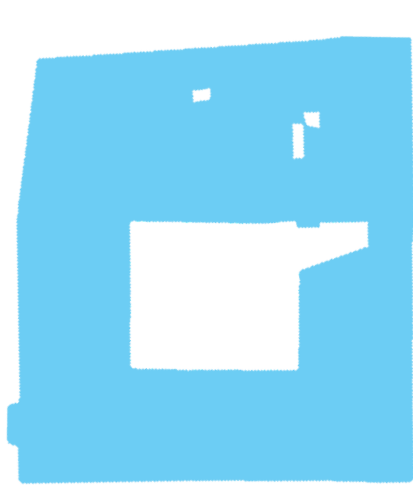
BUILDING VARIATIONS & MATERIALS



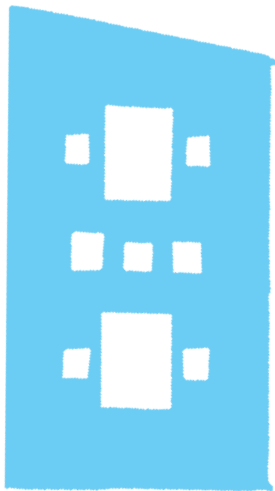
COURTYARD TYPOLOGY



Retail + Living



Civic Building



Residential



Residential Block



Retail + Living

Arrecife implements a variety of courtyard typologies in its architecture in response to its environmental and social needs. The simplest designs utilize a single outdoor space in the middle of a building plan. More complex buildings have several smaller courtyards surrounding a central hearth.

